



c360 My Workplace Installation Guide

Microsoft Dynamics CRM 2011 compatible

c360 Solutions, Inc.
www.c360.com

Products@c360.com



Table of Contents

c360 My Workplace Installation Guide	1
Table of Contents.....	2
Overview and Notes.....	3
Overview	3
Microsoft CRM Compatibility.....	3
c360 My Workplace for Microsoft Dynamics CRM 2011	3
Installation Instructions	4
Steps to install c360 My Workplace for Microsoft Dynamics CRM 2011.....	4
Additional Configurations	11
Web Services URL	11
Load-Balanced Environments	11
Administrator Impersonation.....	12
Troubleshooting.....	12
Licensing	13
Upgrading c360 My Workplace.....	13
Evaluation Licenses	13
Demo Licenses	13
Installing additional organizations.....	14
Uninstall Instructions	15
International Languages	16



Overview and Notes

Overview

This document outlines the process for installing c360 My Workplace for Microsoft Dynamics CRM 2011.

Microsoft CRM Compatibility

c360 My Workplace for Microsoft Dynamics CRM 2011 is compatible with Microsoft Dynamics CRM 2011. For additional product information, please visit <http://www.c360.com/MyWorkplace.aspx>.

Please note that if this installation is on an environment in which c360 My Workplace v3 was installed, you must uninstall the product before continuing with this installation. Please contact support@c360.com for more information.

c360 My Workplace for Microsoft Dynamics CRM 2011

c360 My Workplace is a Microsoft CRM enhancement that provides Microsoft CRM users with an improved CRM workplace screen which allows users to:

- Personally select which columns (activity and/or case fields) they would like to see in the Queue grid and configure default sort order
- Specify a default start up view, selecting between user queues, organizational queues or a combined view
- View items in other user or team queues (where security permissions allow)
- Immediately see a count of items in each queue without clicking on the queue
- Toggle between user, team and queue view with a single click
- Combine both user, team and organizational queues to display together in the same view
- Route and re-assign work from My Workplace

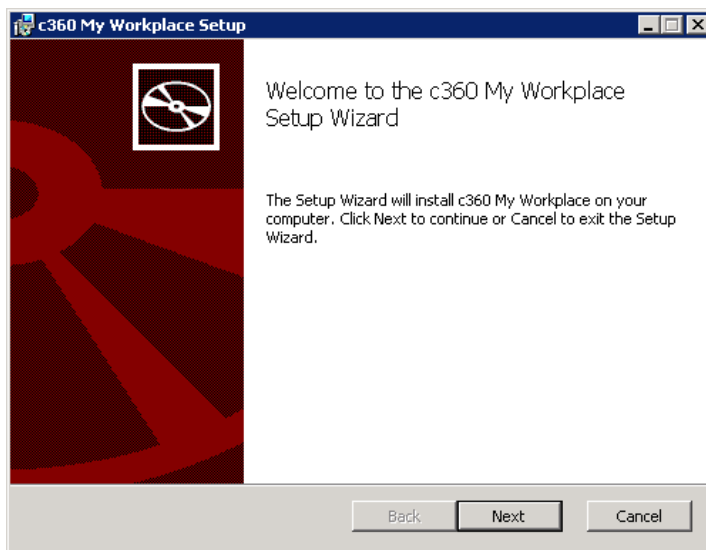
Installation Instructions

Requirements

To install the product the installation application must be run on the CRM server by a user with Local Administrator and CRM Deployment Manager privileges. The user must also be a member of the CRM System Administrator role. The installation of c360 My Workplace for Microsoft CRM 2011 requires the c360 My Workplace CRM 2011.exe file which can be downloaded by visiting <http://www.c360.com/DownloadRegister.aspx>.

Steps to install c360 My Workplace for Microsoft Dynamics CRM 2011

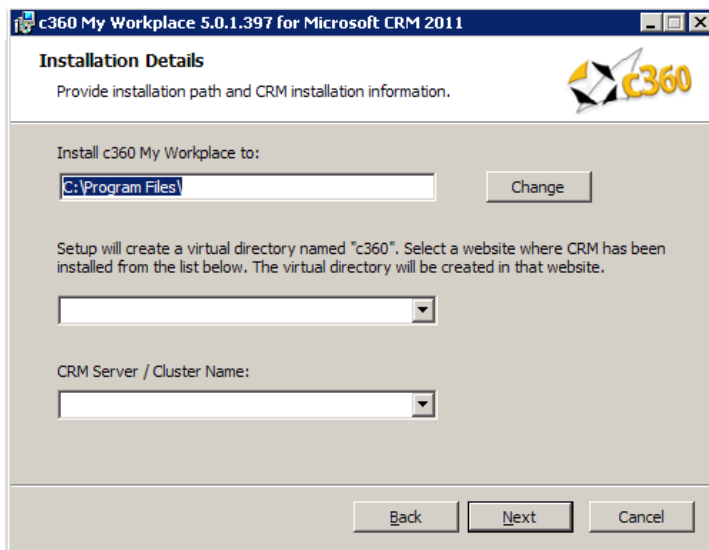
1. Extract the c360 My Workplace crm2011.zip file into a folder on the Microsoft CRM server machine.
2. Double click the 'c360 My Workplace for Microsoft crm2011.exe' file. You will see the following screens.



3. Click '**Next**' to begin the installation process.



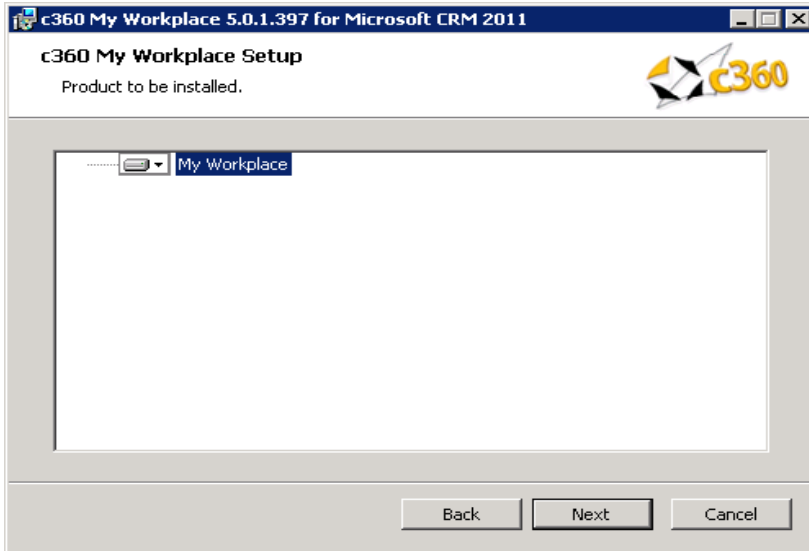
4. If you agree with the terms of the license agreement, select the option labeled 'I accept the terms in the license agreement' and click **'Next'**.



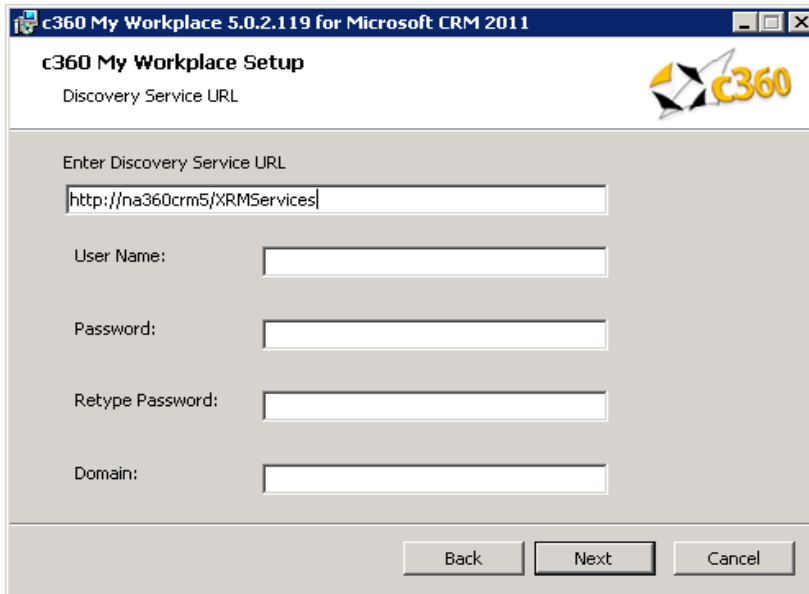
5. Accept the default entry for the installation path or modify. Select the CRM website and verify that the CRM Server / Cluster is correct. Click **'Next'**.

Notes:

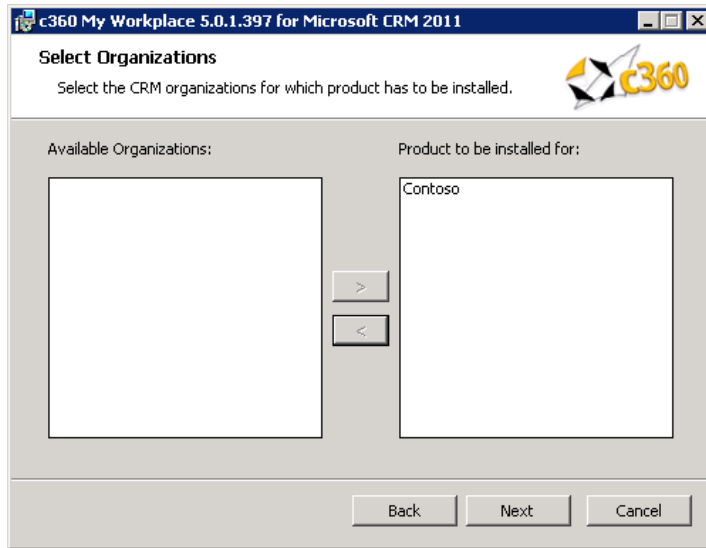
- CRM Server / Cluster Name: Name/ host header/ IP address of the server that is hosting the Microsoft CRM website.
- If any c360 products have previously been installed, this screen will not appear. All configuration settings from the previous install(s) will be used.
- If this is an IFD environment, post-installation ensure that the 'Enable Anonymous Access' setting for the c360 Virtual Directory is disabled.



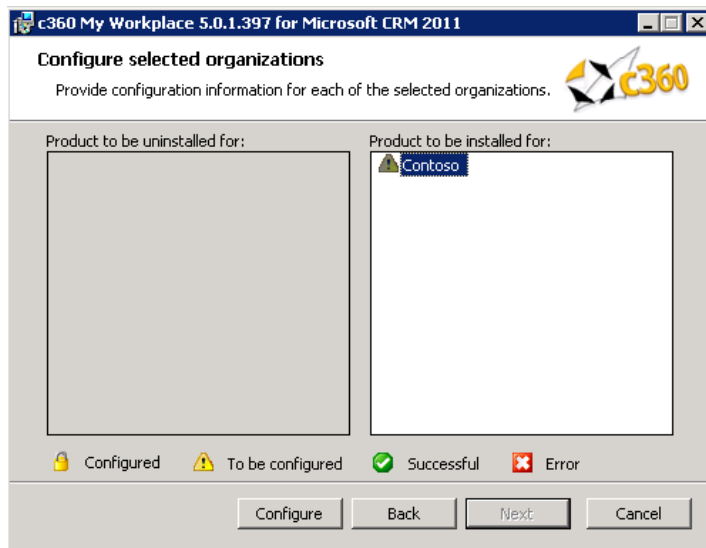
6. Click **'Next'**.



7. Accept the default entry for the MSCRM Discovery Service URL or modify. Enter the credentials and Click **'Next'**. These credentials will be used to execute the discovery service methods.
For an IFD Enabled system, fully qualified domain name which has been used for configuring IFD in CRM needs to be entered in Discovery Service URL.



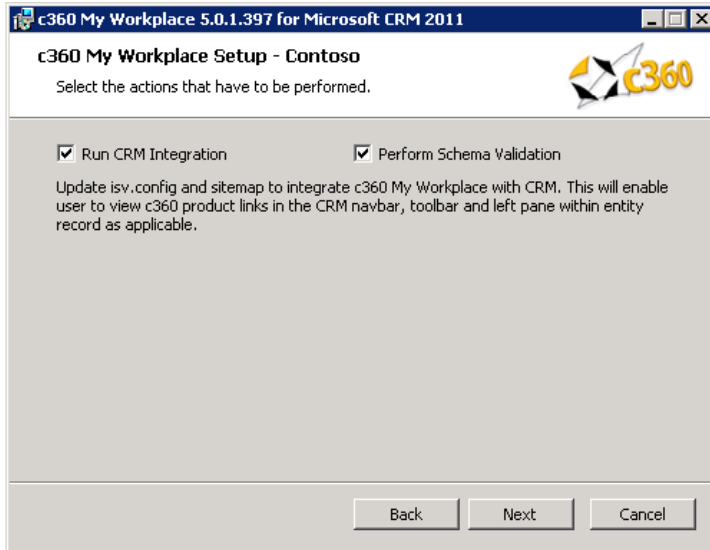
8. Select the Organization(s) for which the product is to be installed. Then click **'Next'**.



9. Select one Organization for which the product is to be configured (In this case, 'Adventure Works Cycle'). Then click **'Configure'**.

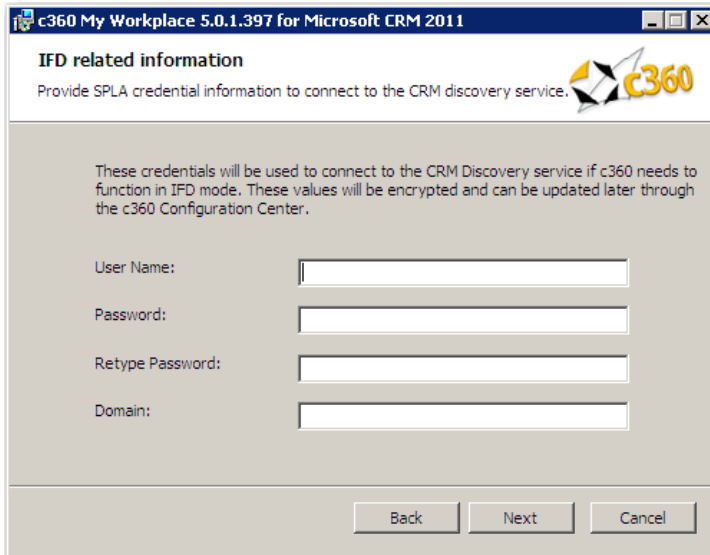
Note:

- **Configured:** The Product has been configured and installed for this organization. It cannot be reconfigured but only uninstalled.
- **To be configured:** The organization has not been configured for installation.
- **Successful:** The organization has been configured and configuration settings have been validated. The product is ready to be installed for the organization.
- **Error:** There has been an error in validating the configuration settings for the organization. Settings need to be reviewed for accuracy and corrected. (There will be an error on the configuration screen deemed to have invalid entries)



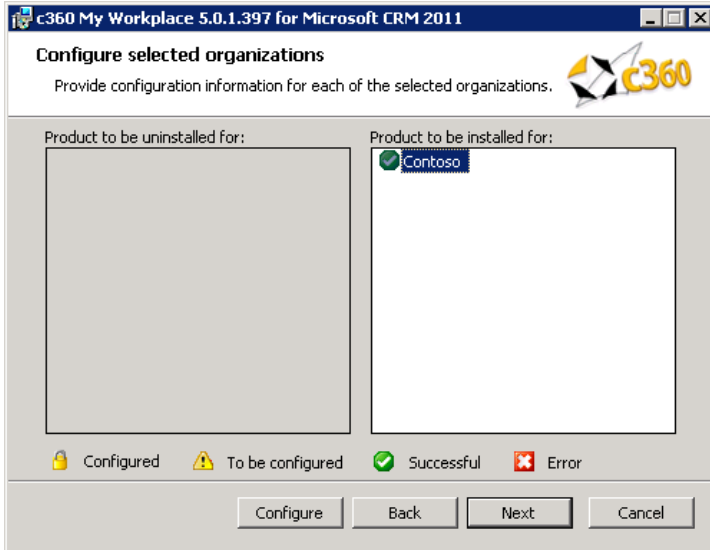
10. Select options to be performed during installation for the selected organization. Click **“Next”**.

Note If installing on a load-balanced environment, please see ‘Additional Configurations’.

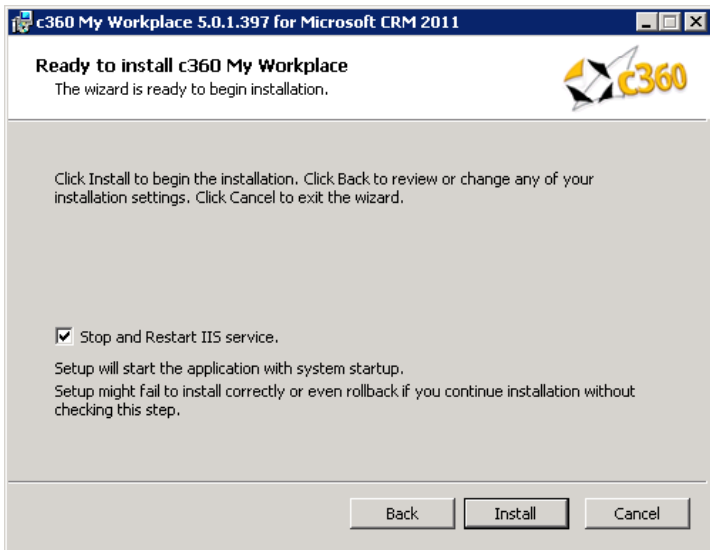


11. Enter SPLA credentials for IFD mode. If c360 My Workplace ever needs to operate in IFD mode, these credentials will be used to connect to the CRM discovery service.

Click **‘Next’**.

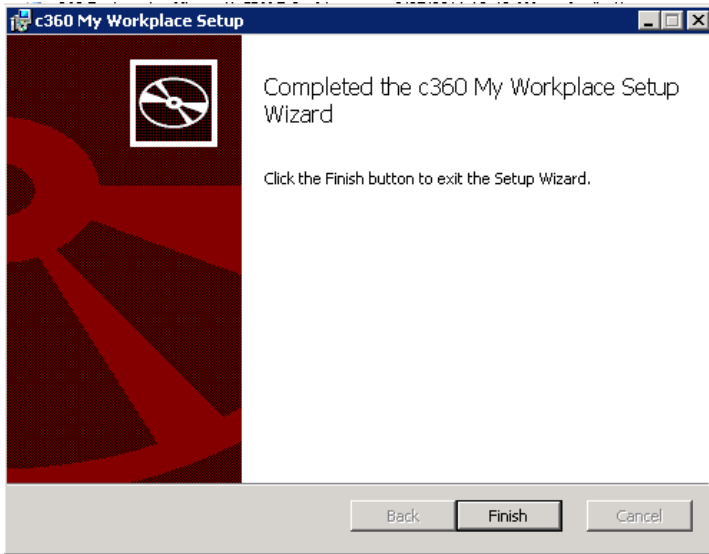


12. Repeat steps 9 – 11 until all organizations have been successfully configured. Then click **'Next'**.

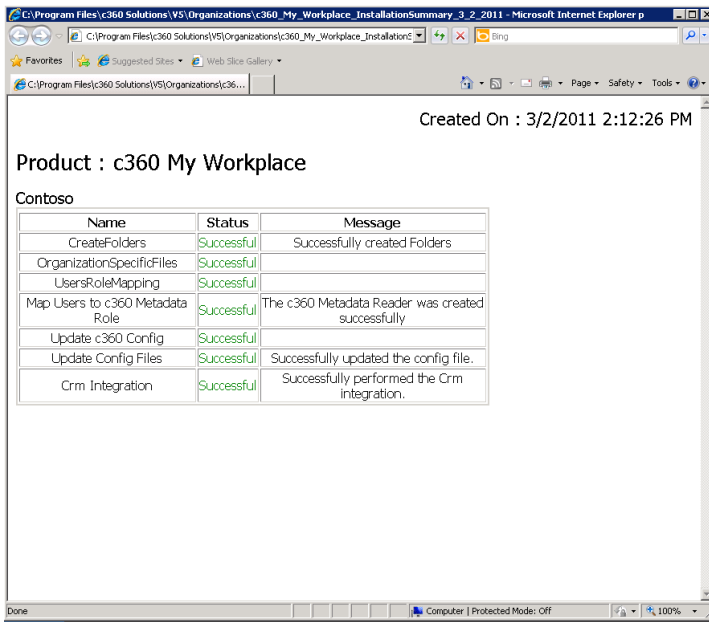


13. Uncheck the IISReset option if an IISReset is undesirable at this time. Click **'Install'** to install c360 My Workplace for Microsoft CRM 2011.

Note: Because an IISReset is required for the product, it is recommended that the installation be postponed until the IISReset action can be performed.



14. Click **'Finish'** to exit the installation wizard.



15. A summary of the installation will appear.



Additional Configurations

Web Services URL

If the Microsoft CRM web site is running with 'non-default' configuration, it will be necessary to add a key to a c360 Configuration file. Examples of non-default installations are:

- CRM website using a non default port number.
- CRM website is configured to use a hostname.
- CRM secured access is enabled (https connection required).

If any of these conditions is true, c360 My Workplace will be unable to contact your CRM system because it attempts to connect using the following default connection string: <http://machinename/MSCRMServices>. To remedy this situation do the following:

1. Open the c360.Config file located in \\V5\Organizations\[OrganizationName]\Config folder in the default directory (C:\Program Files\c360 Solutions) or in the directory selected by you during installation
2. `<add key='WebServicesUrl'
value='http://myservername:8000/MSCRMServices'/>`
3. Replace 'myservername' with the actual name of your CRM server or the hostname if your site is configured to use hostname.
4. Replace '8000' with the TCP port number your CRM website is using.
5. Replace 'http' with 'https' if you have enabled 'CRM secured access'.

Load-Balanced Environments

To support a load-balanced environment, the installer must be run on all load-balancing nodes.

1. When installing on every node after the first, the check-box for running CRM Integrations should be un-selected.
2. It is recommended that the user preferences, license and config folders be synced across nodes.



Administrator Impersonation

In order to override the standard permission check performed by My Workplace, take the following action:

1. Modify the "AdministratorRole" key in the c360.config file, the value of which can take either the form of a GUID or a role name.
2. If the role name contains special characters, the role name must be encoded before adding it to this key.

A user belonging to the specified role or GUID will be considered as an administrator when attempting to access secure areas in My Workplace.

***Note** that this will not override the CRM security model.

Troubleshooting

Search the c360 Knowledge Base for any errors you receive during or after installation. www.c360.com/support.



Licensing

Upgrading c360 My Workplace

It is not possible to migrate from My Workplace v3.0 to My Workplace for CRM 2011. Your system must have My Workplace v4.0 or higher in order to upgrade to c360 My Workplace for CRM 2011.

If c360 My Workplace for CRM 4.0 is already installed with valid licenses, those licenses will be valid for My Workplace for CRM 2011. If you no longer have a valid license, or if this is a fresh installation of c360 My Workplace for CRM 2011, license setup application can be obtained from c360 Solutions Inc upon request. This application is an executable file designed to be run on the CRM server.

Copy the License setup application to the CRM server and double click it to run the application. It will automatically place the license file in the appropriate directory.

Evaluation Licenses

To request a 15 day production evaluation license go to our web site at <http://www.c360.com/Evaluation.aspx>. You will be emailed a licensing application that, when run, will place a valid license file in the appropriate directory.

Demo Licenses

To download "demo licenses" for one of the sample Microsoft Dynamics CRM 2011 installations for organization names 'Adventure Works Cycle Demo', 'Adventure Works Cycle', 'Contoso' or 'Microsoft CRM', please visit our website at <http://www.c360.com/Licenses.aspx>



Installing additional organizations _____

Steps to install additional organizations for c360 My Workplace for Microsoft Dynamics CRM 2011

1. Re-run the c360 My Workplace for Microsoft CRM 2011.exe. Follow the process as described in Installation Instructions.
2. On step 9, note select the addition organization(s) to be installed.
3. Continue the process as described in the rest of the Installation Instructions.



Uninstall Instructions

Steps to uninstall c360 My Workplace for Microsoft Dynamics CRM 2011

To uninstall all pieces of c360 My Workplace, you must be a local Administrator on the server as well as a member of the System Administrator security role in CRM. This user must be the same user that installed c360 My Workplace.

Option 1: From Add/Remove Programs

1. On the CRM server where you installed the product navigate to 'Control Panel' and open 'Add or Remove Programs'
2. Select c360 My Workplace from the list of the currently installed programs
3. Click '**Remove**'
4. Click '**Yes**' in the confirmation message box to begin the uninstall process.
5. Note this will uninstall for all organizations.

Option 2: From the c360 My Workplace .exe

1. On the server, double click the c360 My Workplace installer
2. On the 'Change, repair, or remove installation' screen, click '**Remove**'
3. On the next screen, click '**Remove**' and the executable will uninstall c360 My Workplace

Steps to uninstall an organization for c360 My Workplace for Microsoft Dynamics CRM 2011

1. Re-run the 'c360 My Workplace for Microsoft CRM crm2011.exe' file
2. Select the modify option
3. De-select any configured organizations. Click '**Next**'
4. Click '**Yes**' in the confirmation message box to begin the uninstall process

Note: multiple organizations can be uninstalled at once



International Languages _____

c360 My Workplace for Microsoft Dynamics CRM 2011 includes language translation files which allows you to select the language displayed to the user (German, French etc).

Please go to our language product page <http://www.c360.com/Language.aspx> to obtain instructions for installing and configuring the language translation.