



## **c360 Summary Installation and Configuration Guide**

Microsoft Dynamics CRM 2011 compatible

c360 Solutions, Inc.  
[www.c360.com](http://www.c360.com)

[Products@c360.com](mailto:Products@c360.com)

---



## Table of Contents

---

c360 Summary Installation and Configuration Guide .....	1
Table of Contents.....	2
Overview and Notes.....	3
Overview .....	3
Microsoft CRM Compatibility.....	3
c360 Summary for Microsoft Dynamics CRM 2011 .....	3
Installation Instructions .....	4
Steps to install c360 Summary for Microsoft Dynamics CRM 2011.....	4
Additional Configurations .....	14
User Preferences.....	14
Web Services URL .....	15
Load-Balanced Environments .....	15
Administrator Impersonation.....	16
Troubleshooting.....	16
Licensing .....	17
Evaluation Licenses .....	17
Demo Licenses .....	17
Installing where SQL is on a different Box.....	18
Installing additional organizations.....	19
Uninstall Instructions .....	20
International Languages .....	21



## Overview and Notes

---

### Overview

This document outlines the process for installing c360 Summary for Microsoft Dynamics CRM 2011.

### Microsoft CRM Compatibility

c360 Summary for Microsoft Dynamics CRM 2011 is compatible with Microsoft Dynamics CRM 2011. For additional product information, please visit <http://www.c360.com/Alerts.aspx>.

Please note that if this installation is on an environment in which c360 Summary v3 was installed, you must uninstall the product before continuing with this installation. Please contact [support@c360.com](mailto:support@c360.com) for more information.

### c360 Summary for Microsoft Dynamics CRM 2011

c360 Summary is a Microsoft CRM enhancement that provides Microsoft CRM users with an integrated screen displaying all open and closed Activities, Notes and CRM records associated with all major Microsoft CRM objects.



## Installation Instructions

---

### Requirements

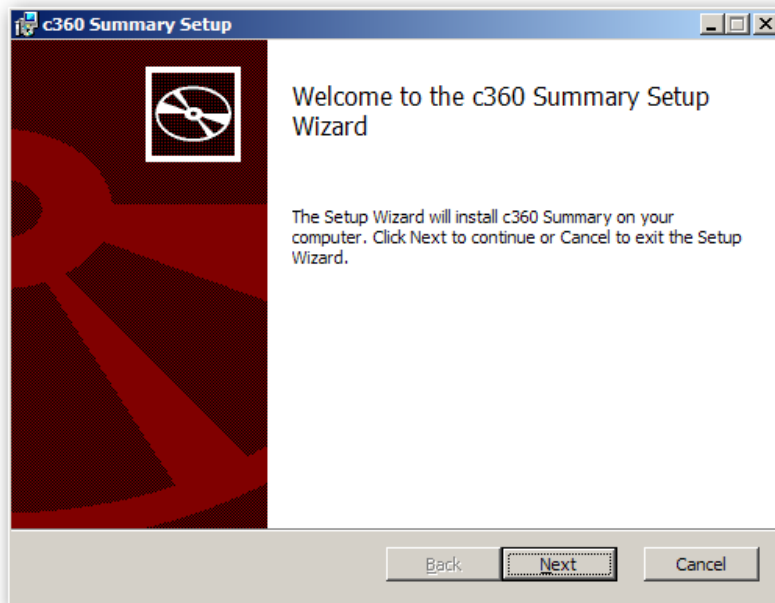
To install the product the installation application must be run on the CRM server by a user with Local Administrator and CRM Deployment Manager privileges. The user must also be a member of the CRM System Administrator role.

If you are supporting an IFD deployed environment, post installation you must modify the c360 and CRM connection strings to use SQL Authentication. These strings are located in the c360 global configuration area.

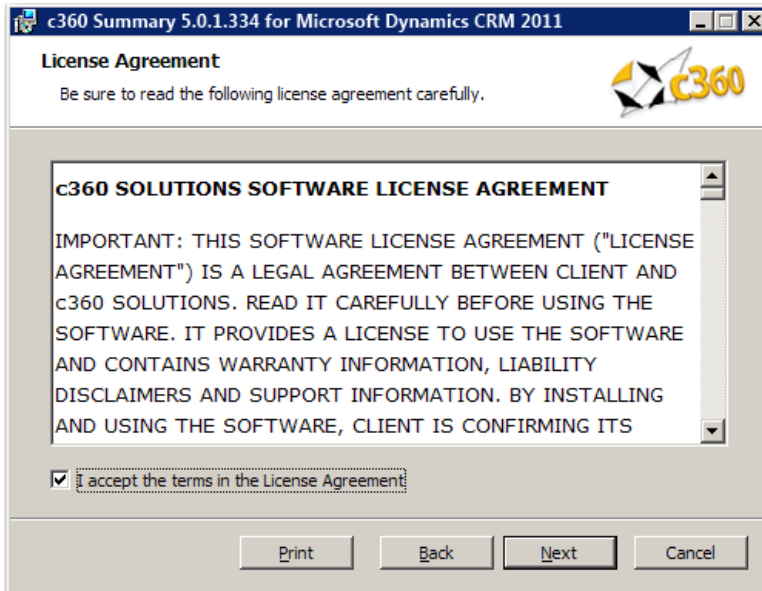
The installation of c360 Summary for Microsoft CRM 2011 requires the c360 Summary crm2011.msi file which can be downloaded by visiting <http://www.c360.com/DownloadRegister.aspx>.

### Steps to install c360 Summary for Microsoft Dynamics CRM 2011

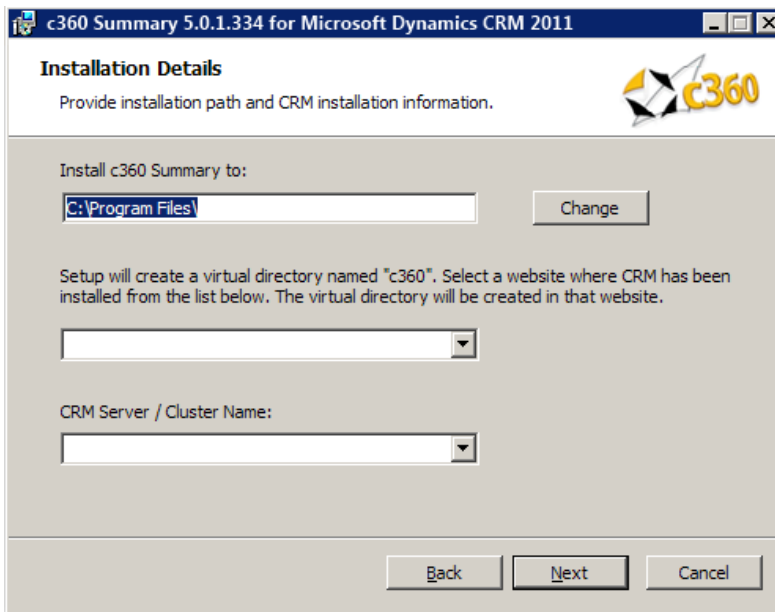
1. Extract the c360 Summary crm2011.zip file into a folder on the Microsoft CRM server machine.
2. Double click the 'c360 Summary for Microsoft crm2011.exe' file. You will see the following screens.



3. Click '**Next**' to begin the installation process.



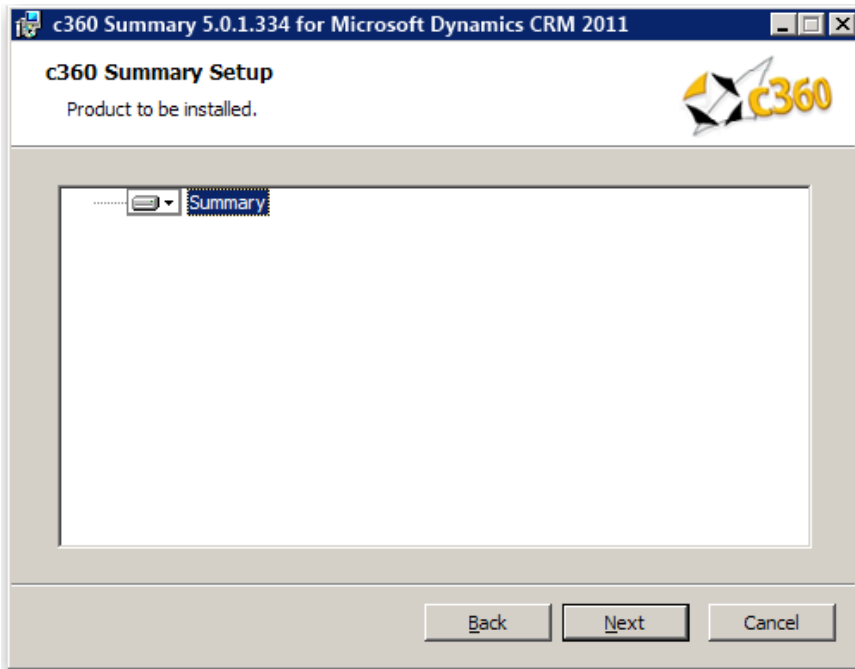
4. If you agree with the terms of the license agreement, select the option labeled 'I accept the terms in the license agreement' and click **'Next'**.



5. Accept the default entry for the installation path or modify. Select the CRM website and the CRM Server / Cluster. Click **'Next'**.

**Notes:**

- CRM Server / Cluster Name: Name/ host header/ IP address of the server that is hosting the Microsoft CRM website.
- If any c360 products have previously been installed, this screen will not appear. All configuration settings from the previous install(s) will be used.
- If this is an IFD environment, post-installation ensure that the 'Enable Anonymous Access' setting for the c360 Virtual Directory is disabled.



6. Click **'Next'**.



**c360 Summary 5.0.2.119 for Microsoft CRM 2011**

**c360 Summary Setup**  
Discovery Service URL

Enter Discovery Service URL

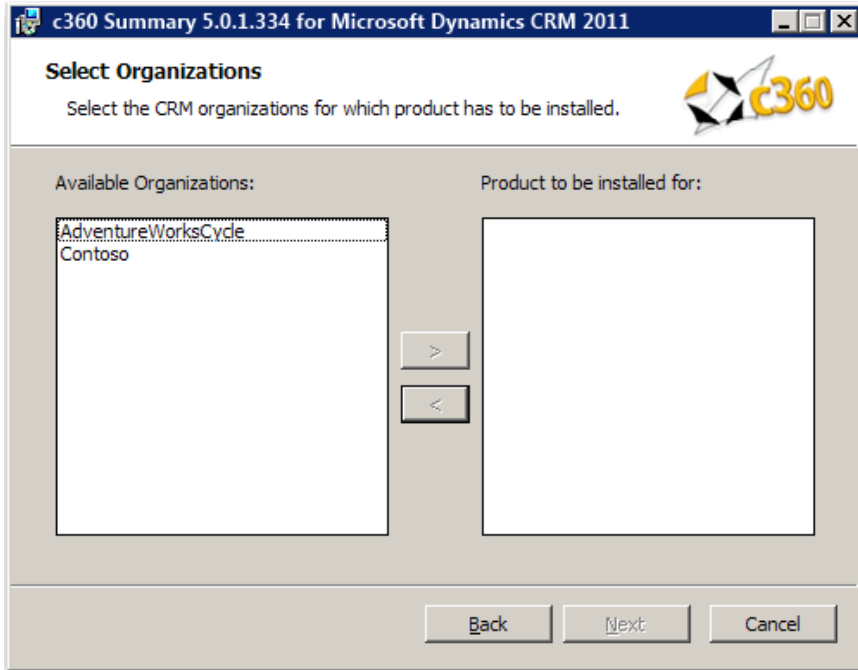
User Name:

Password:

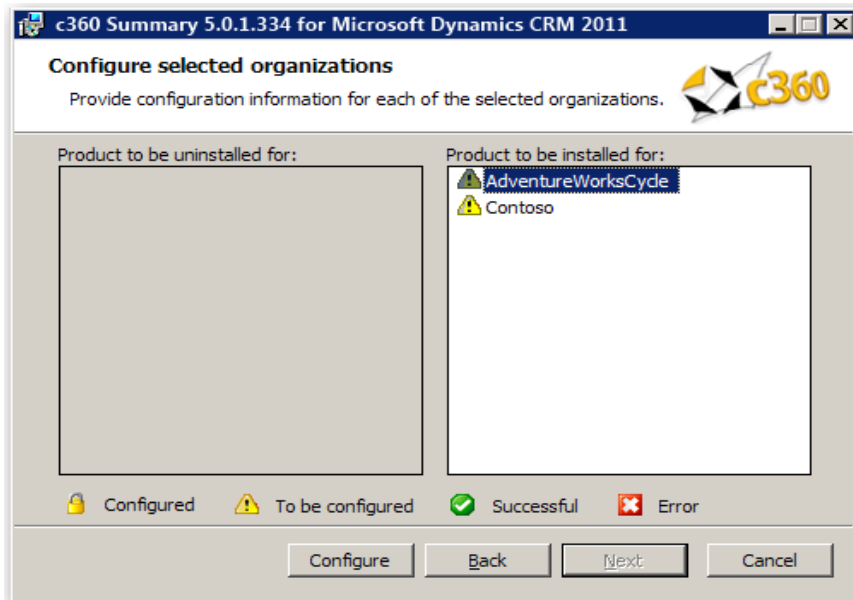
Retype Password:

Domain:

7. Accept the default entry for the MSCRM Discovery Service URL or modify. Enter the credentials and Click 'Next'. These credentials will be used to execute the discovery service methods.  
For an IFD Enabled system, fully qualified domain name which has been used for configuring IFD in CRM needs to be entered in Discovery Service URL.



8. Select the Organization(s) for which the product is to be installed. Then click '**Next**'.

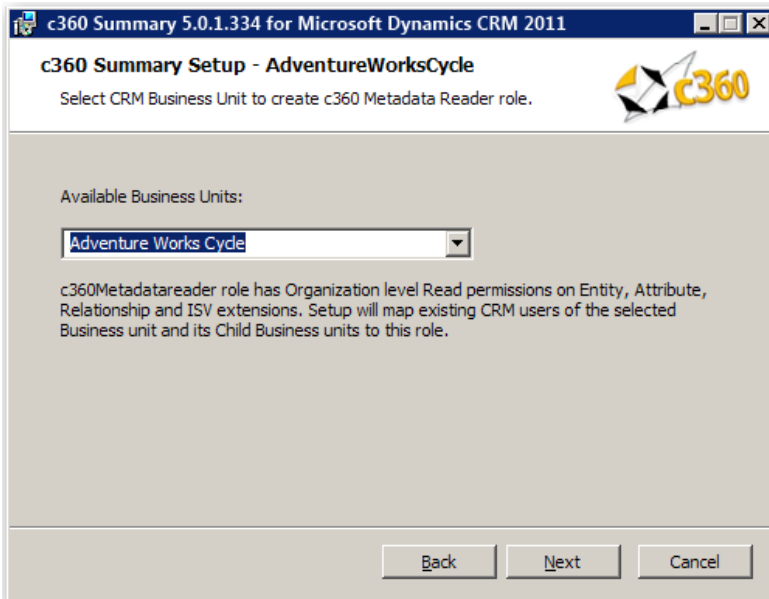


9. Select one Organization for which the product is to be configured (In this case, 'Adventure Works Cycle'). Then click '**Configure**'.



**Note:**

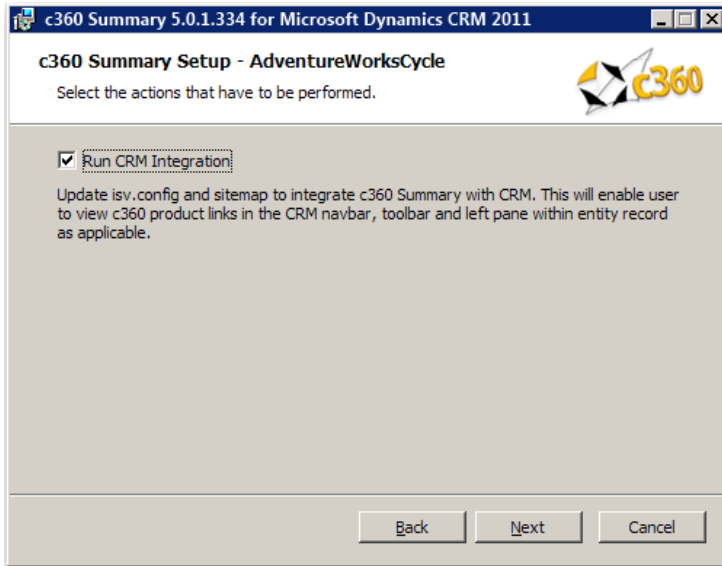
- To be configured: The organization has not been configured for installation.
- Successful: The organization has been configured and configuration settings have been validated. The product is ready to be installed for the organization.
- Error: There has been an error in validating the configuration settings for the organization. Settings need to be reviewed for accuracy and corrected. (There will be an error on the configuration screen deemed to have invalid entries)
- Configured: The Product has been configured and installed for this organization. It cannot be reconfigured but only uninstalled.



10. Select the Business Unit in which the Metadata Reader role will be created. Click 'Next'.

**Note:**

All users that have access to this role will be added automatically. Therefore, it is recommended that the root business unit for the organization be selected.



11. Select options to be performed during installation for the selected organization. Click **"Next"**.

**Note:**

If installing on a load-balanced environment, please see 'Additional Configurations'.



**IFD related information**  
Provide SPLA credential information to connect to the CRM discovery service.

These credentials will be used to connect to the CRM Discovery service if c360 needs to function in IFD mode. These values will be encrypted and can be updated later through the c360 Configuration Center.

User Name:

Password:

Retype Password:

Domain:

Back Next Cancel

12. Enter SPLA credentials for IFD mode. If c360 Alerts ever needs to operate in IFD mode, these credentials will be used to connect to the CRM discovery service.

Click **'Next'**.

**Configure selected organizations**  
Provide configuration information for each of the selected organizations.

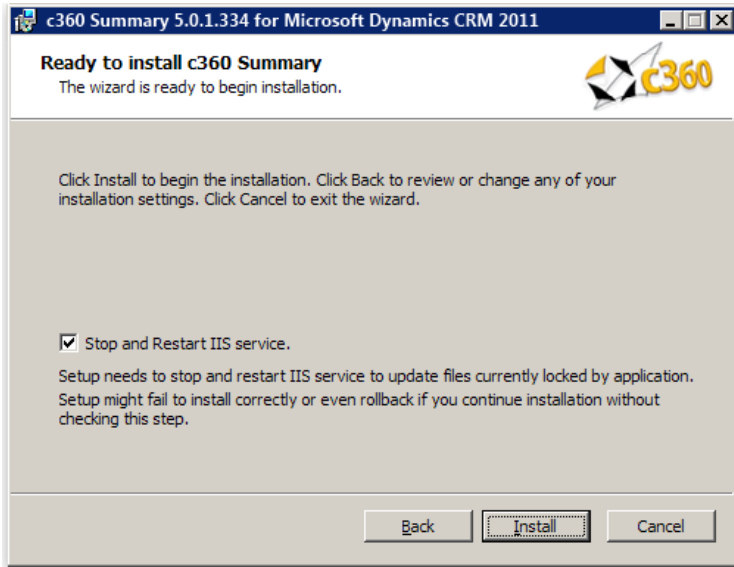
Product to be uninstalled for:

Product to be installed for:  
 AdventureWorksCycle  
 Contoso

Configured To be configured Successful Error

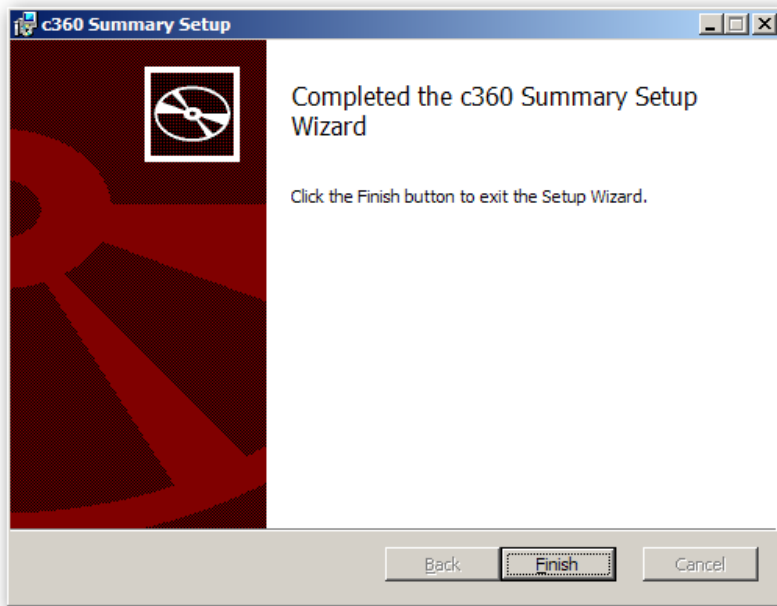
Configure Back Next Cancel

13. Repeat steps 8 – 11 until all organizations have been successfully configured. Then click **'Next'**.

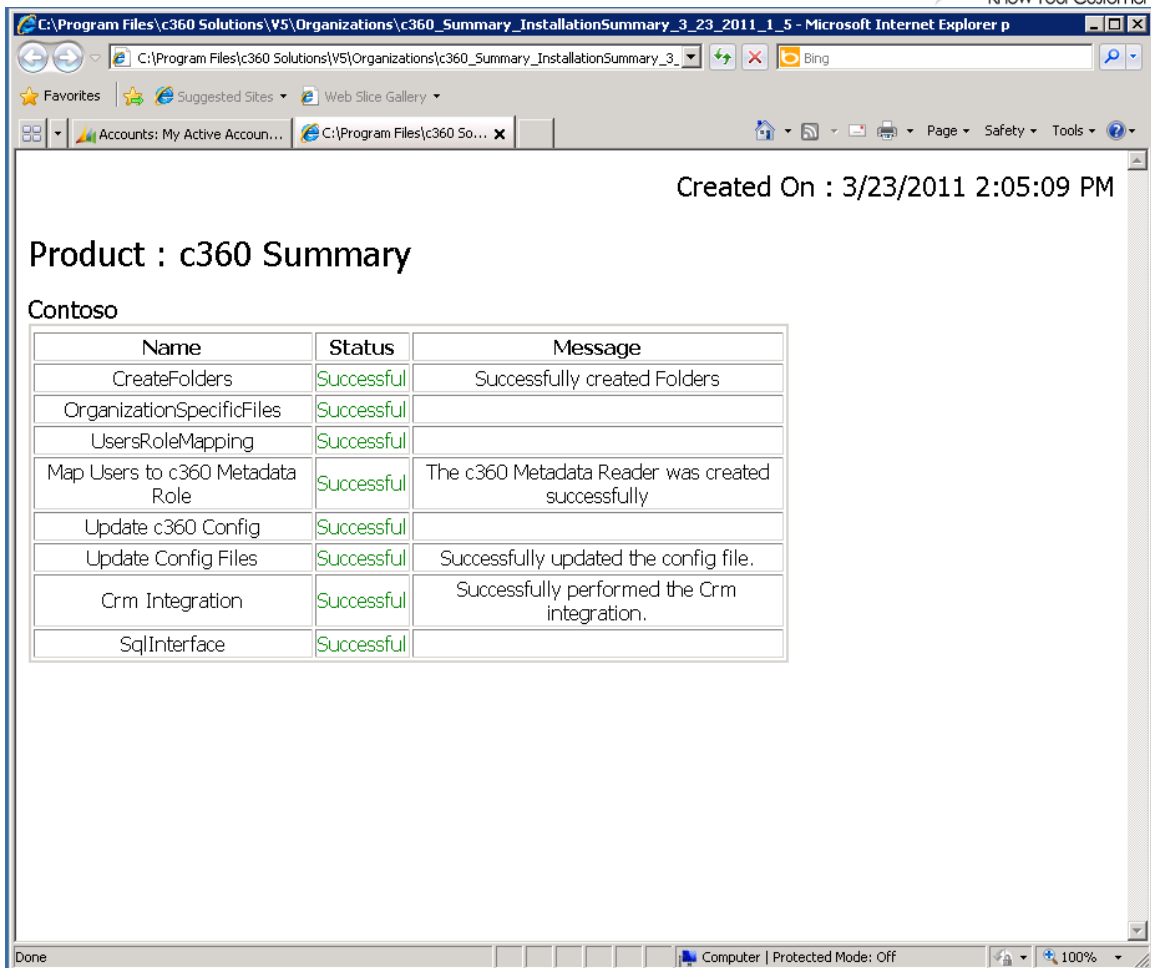


14. Uncheck the IISReset option if an IISReset is undesirable at this time. Click **'Install'** to install c360 Summary for Microsoft CRM 2011.

**Note:** Because an IISReset is required for the product, it is recommended that the installation be postponed until the IISReset action can be performed.



15. Click **'Finish'** to exit the installation wizard.



16. A summary of the installation will appear.

## Additional Configurations

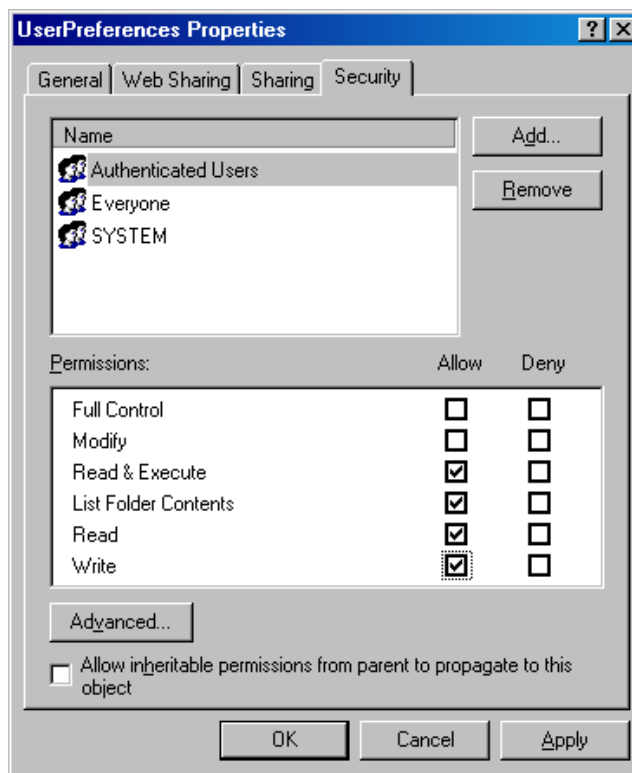
---

### User Preferences

Individual user preferences are stored in config files located in \V5\Organizations\[OrgName]\UserPreferences folder in the default directory (C:\Program Files\c360 Solutions) or in the directory selected by you during installation. In order for users to save their preferences, they must have 'write' permission for that folder.

To assign 'Write' permission for Authenticated Users on 'UserPreferences' folder:

1. In Windows explorer, right click on 'UserPreferences' folder and click on 'properties'.
2. Click the 'Security' tab. If 'Authenticated Users' is not already listed, click '**Add**' and type 'Authenticated Users' in the window and click '**OK**'.
3. Ensure that Read & Execute, List Folder Contents, Read, and Write permissions are checked for 'Authenticated Users'.





## Web Services URL

If the Microsoft CRM web site is running with 'non-default' configuration, it will be necessary to add a key to a c360 Configuration file. Examples of non-default installations are:

- CRM website using a non default port number.
- CRM website is configured to use a hostname.
- CRM secured access is enabled (https connection required).

If any of these conditions is true, c360 Summary will be unable to contact your CRM system because it attempts to connect using the following default connection string: <http://machinename/MSCRMServices>. To remedy this situation do the following:

1. Open the c360.Config file located in \\V5\Organizations\[OrganizationName]\Config folder in the default directory (C:\Program Files\c360 Solutions) or in the directory selected by you during installation
2. `<add key='WebServicesUrl'  
value='http://myservername:8000/MSCRMServices'/>`
3. Replace 'myservername' with the actual name of your CRM server or the hostname if your site is configured to use hostname.
4. Replace '8000' with the TCP port number your CRM website is using.
5. Replace 'http' with 'https' if you have enabled 'CRM secured access'.

## Load-Balanced Environments

To support a load-balanced environment, the installer must be run on all load-balancing nodes.

1. When installing on every node after the first, the check-box for running CRM Integrations should be un-selected.
2. It is recommended that the user preferences, license and config folders be synced across nodes.



## **Administrator Impersonation**

In order to override the standard permission check performed by Summary, take the following action:

1. Modify the "AdministratorRole" key in the c360.config file, the value of which can take either the form of a GUID or a role name.
2. If the role name contains special characters, the role name must be encoded before adding it to this key.

A user belonging to the specified role or GUID will be considered as an administrator when attempting to access secure areas in Summary.

**\*Note** that this will not override the CRM security model.

## **Troubleshooting**

Search the c360 Knowledge Base for any errors you receive during or after installation. [www.c360.com/support](http://www.c360.com/support).



## Licensing

---

It is not possible to migrate from Summary v3.0 to Summary for CRM 2011. Your system must have Summary v4.0 or higher in order to upgrade to c360 Summary for CRM 2011.

If c360 Summary for CRM 4.0 is already installed with valid licenses, those licenses will be valid for Summary for CRM 2011. If you no longer have a valid license, or if this is a fresh installation of c360 Summary for CRM 2011, license setup application can be obtained from c360 Solutions Inc upon request. This application is an executable file designed to be run on the CRM server.

Copy the License setup application to the CRM server and double click it to run the application. It will automatically place the license file in the appropriate directory.

### **Evaluation Licenses**

To request a 15 day production evaluation license go to our web site at <http://www.c360.com/Evaluation.aspx>. You will be emailed a licensing application that, when run, will place a valid license file in the appropriate directory.

### **Demo Licenses**

To download "demo licenses" for one of the sample Microsoft Dynamics CRM 2011 installations for organization names 'Adventure Works Cycle Demo', 'Adventure Works Cycle', 'Contoso' or 'Microsoft CRM', please visit our website at <http://www.c360.com/Licenses.aspx>



## **Installing where SQL is on a different Box**

1. When SQL Server is on a different Box , install the components where CRM is installed
  1. Microsoft SQL Server 2008 Management Objects X86 (32 Bit)
  2. Microsoft SQL Server System CLR Types X86 (32 Bit)

These Components can be downloaded from the link mentioned  
<http://www.microsoft.com/downloads/en/details.aspx?FamilyId=C6C3E9EF-BA29-4A43-8D69-A2BED18FE73C&displaylang=en>

This will be applicable for 5.0.1 Release.



## **Installing additional organizations \_\_\_\_\_**

### **Steps to install additional organizations for c360 Summary for Microsoft Dynamics CRM 2011**

1. Re-run the c360 Summary for Microsoft CRM crm2011.exe. Follow the process as described in Installation Instructions.
2. On step 8, note select the addition organization(s) to be installed.
3. Continue the process as described in the rest of the Installation Instructions.



## Uninstall Instructions

---

### Steps to uninstall c360 Alerts for Microsoft Dynamics CRM 2011

To uninstall all pieces of c360 Alerts, you must be a local Administrator on the server as well as a member of the System Administrator security role in CRM. This user must be the same user that installed c360 Alerts.

#### Option 1: From Add/Remove Programs

1. On the CRM server where you installed the product navigate to 'Control Panel' and open 'Add or Remove Programs'
2. Select c360 Alerts from the list of the currently installed programs
3. Click '**Remove**'
4. Click '**Yes**' in the confirmation message box to begin the uninstall process.

**Note:** this will uninstall for all organizations.

#### Option 2: From the c360 Alerts .exe

1. On the server, double click the c360 Alerts installer
2. On the 'Change, repair, or remove installation' screen, click '**Remove**'
3. On the next screen, click '**Remove**' and the executable will uninstall c360 Alerts

### Steps to uninstall an organization for c360 Summary for Microsoft Dynamics CRM 2011

1. Re-run the 'c360 Summary for Microsoft CRM 2011.exe' file.
2. Select the modify option.
3. De-select any configured organizations. Click '**Next**'.
4. Click '**Yes**' in the confirmation message box to begin the uninstall process.

**Note:** multiple organizations can be uninstalled at once.



## **International Languages** \_\_\_\_\_

c360 Summary for Microsoft Dynamics CRM 2011 includes language translation files which allows you to select the language displayed to the user (German, French etc).

Please go to our language product page <http://www.c360.com/Language.aspx> to obtain instructions for installing and configuring the language translation.