

c360 Import Manager for Microsoft Dynamics CRM 4.0 – Performance test

Preface

The purpose of this stress test is to benchmark c360 Import Manager and Microsoft Dynamics CRM 4.0 by creating new records in the CRM system.

The test

The test consists of one import package containing one import rule. This rule has 8 field mappings and no match criterion or transformations. The import is done into a custom entity and the data set is text file with more than 47.000 records.

The setup

The test was performed on the following hardware:

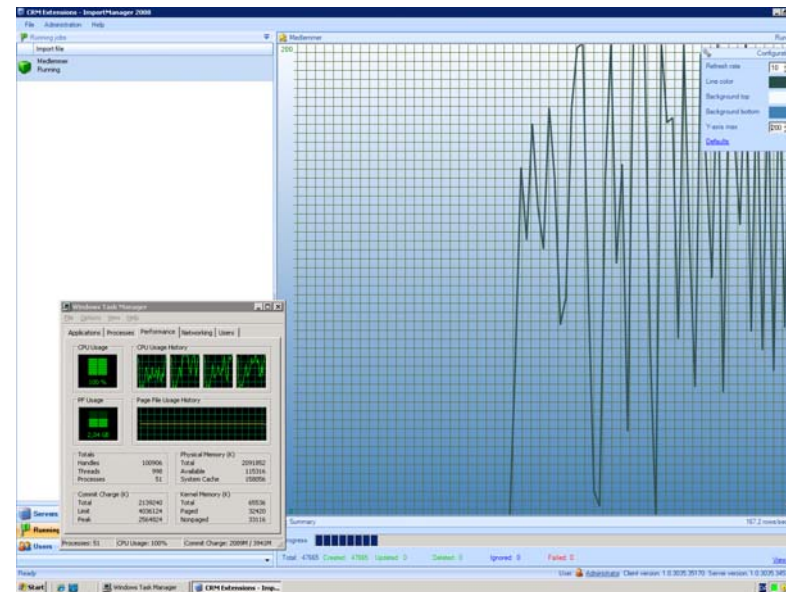
- Quad Core Intel® Xeon®, 2X6MB Cache, 2.5GHz
- Raid controller with 256 MB Cache.
- 2 x Hotswap SAS disks 146GB 15K. (Ultra 320). RAID 1
- 4 GB DDR2 SD Ram (667 Mhz reg.).

Below is a list for the software installed:

- Microsoft Windows 2003 R2 x64, Domain Controller, IIS 6.0
- Microsoft SQL Server 2005 Standard Edition x64
- Microsoft Dynamics CRM 4.0 x64
- c360 Import Manager for CRM 4.0

The results

On the following setup creates by average **200** records per second.



Recommended reading

- Import Manager Documentation
<http://www.c360.com/ImportManager.aspx>
- Microsoft Dynamics CRM 4.0 Performance and Scalability White Papers
<https://www.microsoft.com/downloads/details.aspx?FamilyId=5852B14A-394C-4898-8374-CAF5E6479E80&displaylang=en>
- Microsoft Dynamics CRM 4.0 Performance Toolkit
<http://www.codeplex.com/crmperftoolkit>