

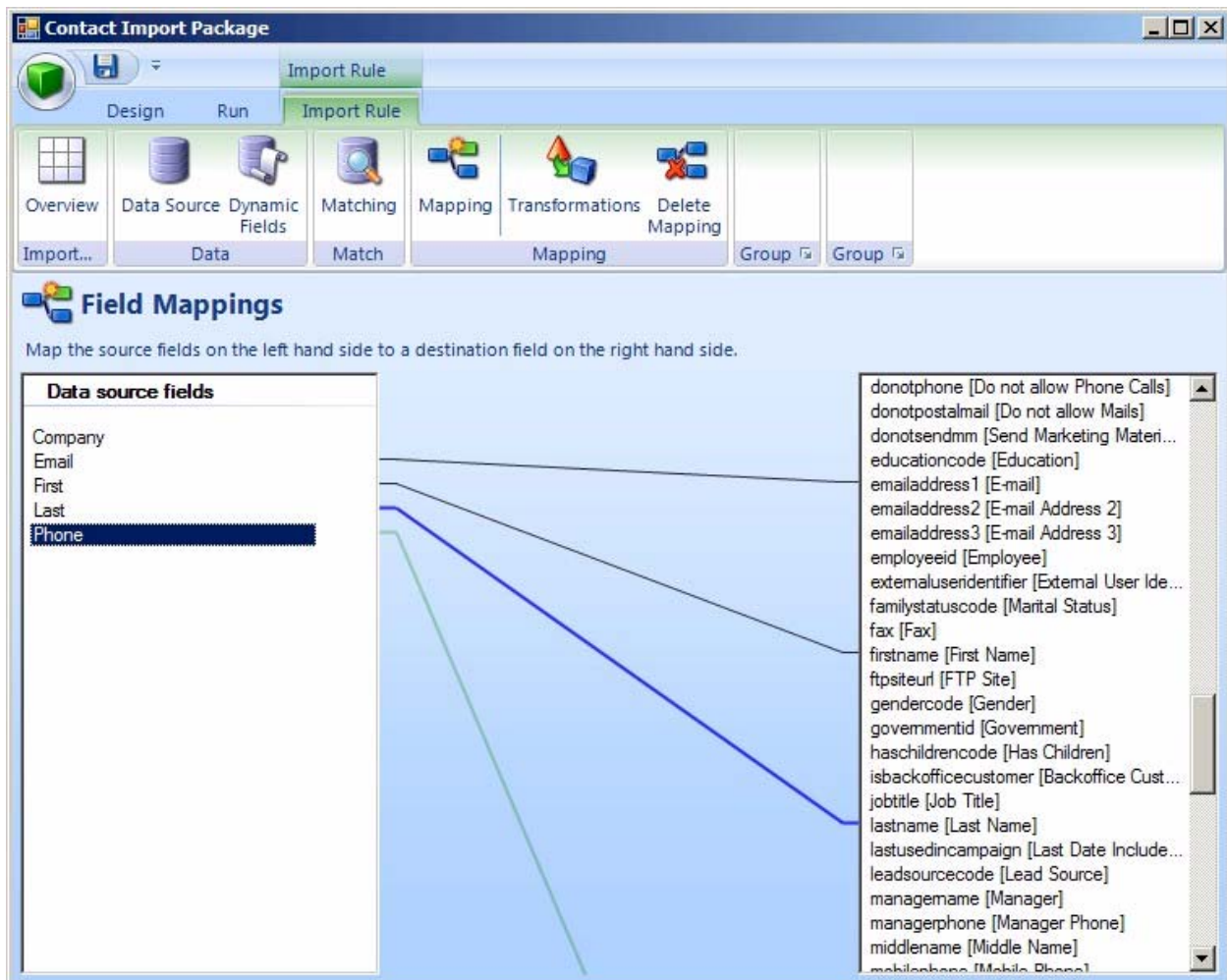


## c360 Import Manager for Microsoft Dynamics CRM 4.0

### Overview

c360 Import Manager is a powerful data import tool built specifically for Microsoft Dynamics CRM 4.0. Import Manager allows large scale management of data with unprecedented control and monitoring during import, updating and deletion of data.

Besides allowing you to manage sophisticated data import tasks to Microsoft Dynamics CRM, Import Manager can also help you with your complex data matching needs without requiring any SQL knowledge. Import Manager allows easy drag and drop mapping of fields as well as the possibility of transforming your data on the fly with the help of the new dynamic field functionality. Furthermore, with Import Manager, it is now possible to delete unwanted data as part of the data transformation process.



*c360 Import Manager*



Import Manager's new client-server architecture also enables one Import Manager installation to connect to several CRM Servers. Therefore it is possible to log into the Import Manager Server from a client and control the import process according to each user's privileges.

Another feature is the new scheduling engine that runs tasks automatically on a regular basis, which is an ideal solution for larger imports as well as the conservation of system resources during office hours. This feature enables you to ensure that your CRM database is always updated with the latest information from all of external sources.

Import Manager is integrated with Excel, Access, SQL, ERP Systems, Text Files, other CRM Systems and any ODBC based systems and has intuitive Office 2007-like user interface.

The benefits of Import Manager are:

- Import, update and delete data in all standard and customized entities
- Relate entities to each other
- Scheduled imports
- Connects to all major data sources on Microsoft Dynamics CRM (on-premise, live and hosted)
- Several CRM servers can be controlled from one Import Manager server

Below chart lists the differences b/w c360 Import Manager and the Microsoft Dynamics CRM Import capabilities

	Microsoft Dynamics CRM 4.0	c360 Import Manager
<b>All Customizable entities</b> Import into all entities and attributes in CRM including custom entities and attributes	✓	✓
<b>Relationships</b> Manage relationships between objects	Partly	✓
<b>Save Import</b> Save import mappings as a template for later use	✓	✓
<b>Duplicate checking</b> Update records instead of creating duplicates when a given match criterion is met		✓
<b>Update records</b> Update records based on a given key	Partly (only available through Excel export/import)	✓
<b>Delete</b> Delete records based on a given match criterion		✓



	Microsoft Dynamics CRM 4.0	c360 Import Manager
<b>Schedule Imports</b> Schedule imports on a daily basis		✓
<b>Data sources</b> Connect and collect data from other sources	CSV	CSV, ODBC, Excel, Access, Custom plugins
<b>Transformations</b> Transform, combine and manipulate data on-the-fly when importing		✓
<b>CRM-to-CRM data migration (multi tenant)</b> Import data from other Microsoft Dynamics CRM systems		✓
<b>Advanced Ownership</b> Set the ownership of any given object in the system based on data from the data source or inherit from related objects		✓
<b>Advanced match criteria</b> Create advanced match criteria based on multiple fields from the data source		✓
<b>Command line tools</b> Execute, stop, log imports from the Command Prompt		✓
<b>Office 2007 UI</b> Consistent Office 2007 Look-and-feel experience	✓	✓
<b>Multiple CRM installations</b> Manage multiple CRM installations within one ImportManager instance		✓
<b>Entity specific actions</b> Execute platform specific logic like "Set State", "Add to marketing list", "Add User to Security Role" ect.		✓

*Comparison chart with Microsoft CRM's import tool*

Import Manager is available in 2 Editions

### 1. Migration Edition

- 45-day version of Import Manager
- Perfect for initial data imports
- Customers can upgrade to the Full Edition anytime within the 45 days

### 2. Full Edition

- No Expiry
- Perfect for initial and on-going data imports



### Evaluation Copies

Import Manager comes with a fully functional evaluation version with the ability to import 10 rows in each import

### Pricing

Import Manager is sold based on the number of active CRM users.

Import Manager Full Edition		
Small	1-25 users	\$2,195
Medium	26-75 users	\$3,595
Professional	76-150 users	\$4,395
Enterprise	150+ users	\$4,995

Import Manager Migration Edition		
Small	1-25 users	\$895
Medium	26-75 users	\$1,295
Professional	76-150 users	\$1,395
Enterprise	150+ users	\$1,695

Import Manager Upgrade (Migration to Full Edition)		
Small	1-25 users	\$1,300
Medium	26-75 users	\$2,300
Professional	76-150 users	\$3,000
Enterprise	150+ users	\$3,300

### Support, Upgrades and Enhancements

The list price of Import Manager includes first year support, upgrades and enhancement per the c360 Solutions Software license agreement. After the first year, a support and enhancement plan can be purchased for 20% of the cost of Import Manager.

### c360 Partner Program

Authorized Microsoft CRM partners may inquire about the c360 partner program by visiting <http://www.c360.com/PartnerProgram.aspx>.

### Information

For more information on c360 Import Manager, contact c360 Solutions at:

c360 Solutions Incorporated  
Two Concourse Parkway, Suite 800  
Atlanta, GA 30328  
(888) 929-3670  
<http://www.c360.com>  
[Products@c360.com](mailto:Products@c360.com)