

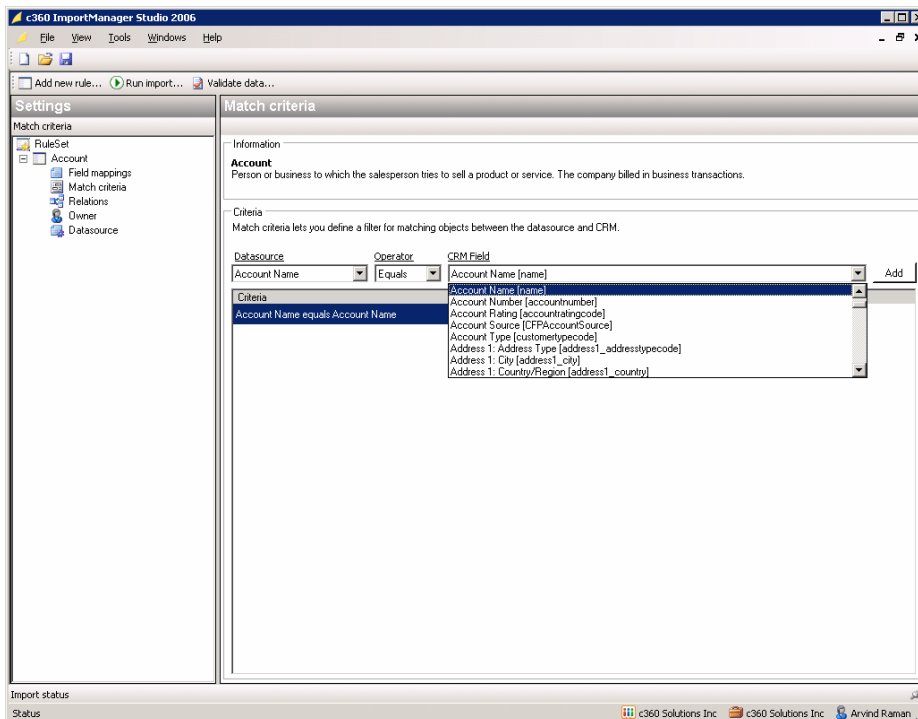


c360 Import Manager for Microsoft Dynamics CRM 3.0

Overview

c360 Import Manager is a powerful data import tool built specifically for Microsoft Dynamics CRM. Import Manager makes it possible to import data from one or more data sources, create new records of a given entity in the CRM database, and create relationships to other entities in one single process. Compared to the import tool within Microsoft CRM, Import Manager offers a more flexible way to import data including the ability to create relationships to an existing entity in CRM, creating new relationships between entities and in the Import Process and schedule on-going data imports. Import Manager gives you the ability to:

- Import core data into Microsoft CRM entities (Accounts, Contacts, Opportunities, Cases)
- Import data into **custom entities** and **custom fields**
- Relate entities to each other
- Create new relationship between entities
- Customized field mapping
- Customizable duplicate checking
- Data cleansing capability – updating fields on already existing records during an import
- Save your field mapping to a configuration file for later use
- **Scheduling functionality** for **on-going** regular data imports
- Create on-going data import from your data provider (e.g, Dun & Bradstreet, ERP system)
- Plug-ins for ODBC datasource, Text files, Excel files





	Microsoft CRM 3.0	c360 Import Manager
Entities		
Accounts	✓	✓
Contacts	✓	✓
Leads	✓	✓
All customizable entities		✓
Relationships		
Relate contacts to accounts		✓
Relationships b/w all entities		✓
Features		
Save Import template		✓
Duplicate checking		✓
Update records with new information		✓
Schedule imports		✓
Datasources		
Excel plug-in		✓
ODBC plug-in		✓
Custom plug-in (develop your own)		✓

Comparison chart with Microsoft CRM's import tool

Import Manager is available in 2 Editions

1. Migration Edition

- 45-day version of Import Manager
- Perfect for initial data imports
- Customers can upgrade to the Full Edition anytime within the 45 days

2. Full Edition

- No Expiry
- Perfect for initial and on-going data imports

Evaluation Copies

Import Manager comes with a fully functional evaluation version with the ability to import 10 rows in each import

Pricing

Import Manager is sold as a site license. The cost of Import Manager is

- Full Edition - \$2495/organization
- Migration Edition - \$795/organization

Support, Upgrades and Enhancements

The list price of Import Manager includes first year support, upgrades and enhancement per the c360 Solutions Software license agreement. After the first year, a support and enhancement plan can be purchased for 20% of the cost of Import Manager.



c360 Partner Program

Authorized Microsoft CRM partners may inquire about the c360 partner program by visiting <http://www.c360.com/PartnerProgram.aspx>.

Information

For more information on c360 Import Manager, contact c360 Solutions at:

c360 Solutions Incorporated
Two Concourse Parkway, Suite 800
Atlanta, GA 30328
(888) 929-3670
<http://www.c360.com>
Products@c360.com