



IMPORT MANAGER, REPORT AUTHORIZING

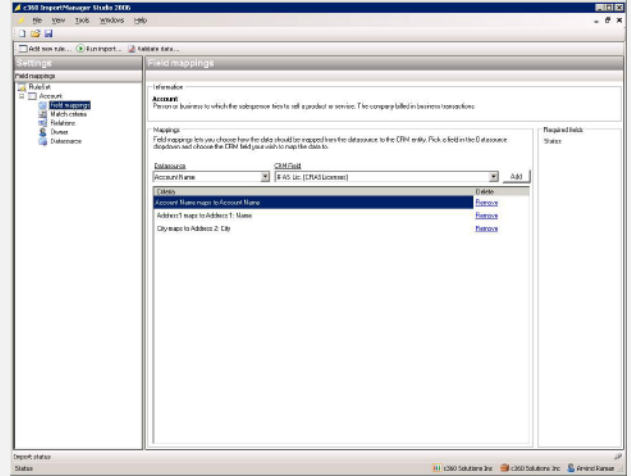


IMPORT MANAGER

c360 Import Manager is a powerful data import tool built specifically for Microsoft Dynamics CRM. Import Manager makes it possible to import data from one or more data sources, create new records of a given entity in the CRM database, and create relationships to other entities in one single process. Compared to the import tool within Microsoft CRM, Import Manager offers a more flexible way to import data including the ability to create relationships to an existing entity in CRM, creating new relationships between entities and in the Import Process and schedule on-going data imports.

Import Manager gives you the ability to:

- Import core data into Microsoft CRM entities (Accounts, Contacts, Opportunities, Cases)
- Import data into custom entities and custom fields
- Relate entities to each other
- Create new relationship between entities
- Customized field mapping
- Customizable duplicate checking
- Data cleansing capability – updating fields on already existing records during an import
- Save your field mapping to a configuration file for later use
- Scheduling functionality for on-going regular data imports
- Create on-going data import from your data provider (e.g. Dun & Bradstreet, ERP system)
- Plug-ins for ODBC datasource, Text files, Excel files.



REPORT AUTHORIZING

- c360 Reporting is an Easy-to-use Powerful Report Authoring Tool that allows CRM users to easily and quickly generate reports to access their most import asset: their information.
- Designed for people who make reports, c360 Reporting delivers a results-oriented user experience with the look and feel of Microsoft Office 2007. CRM report designers can easily create reports in minutes, using their CRM Filtered Views, ensuring the security of their data once the reports are published back to the reporting server. CRM-specific hidden parameters are easily added to the reports, further enhancing the overall integration of reporting in Microsoft CRM.
- Using the 'Repurpose rather than Recreate' approach, c360 Reporting gives report designers the unique ability to design, search, re-use and securely share any report or report component. As a result of leveraging existing reports and report components, Organizations can decrease report deployment time, reduce the time, and costs required to deploy reports.

