



c360 CRM/SharePoint Integration SharePoint Proxy Component Installation Guide

Microsoft Dynamics CRM 4.0 compatible

Tuesday, July 29, 2008.

c360 Solutions, Inc.

www.c360.com

Products@c360.com



Table of Contents

c360 CRM/SharePoint Integration.....	1
SharePoint Proxy Component.....	1
Installation Guide.....	1
Table of Contents.....	2
Overview and Notes _____	3
Overview	3
Microsoft CRM Compatibility	3
c360 SharePoint Proxy Component	3
Installation Instructions _____	4
Uninstall Instructions _____	7



Overview and Notes

Overview

This document outlines the process of installing c360 SharePoint Proxy component.

Microsoft CRM Compatibility

c360 Sharepoint Integration for Microsoft Dynamics CRM 4.0 is compatible with Microsoft CRM version 4.0. For additional product information, visit <http://www.c360.com/SharepointIntegration.aspx>

c360 SharePoint Proxy Component

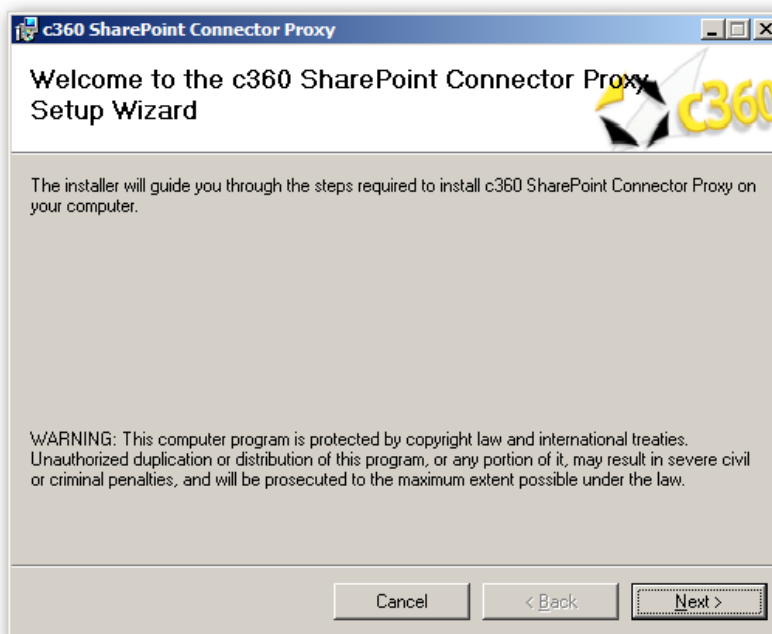
This component is an integral part of the c360 CRM/SharePoint Integration add-on. It is used as a communication channel between CRM and SharePoint.

Installation Instructions _____

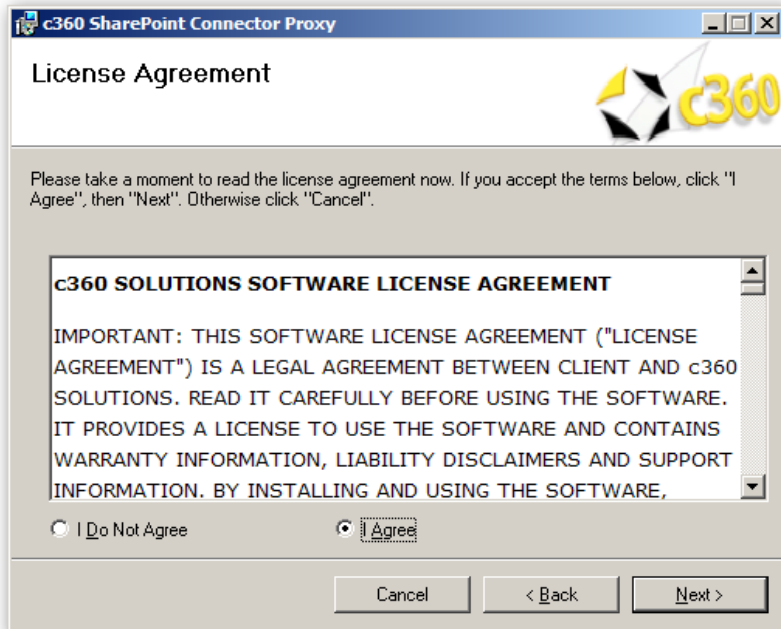
To install the product the installation application must be run on the SharePoint server by a user with Domain Administrator privileges.

Steps to install c360 SharePoint Proxy Component

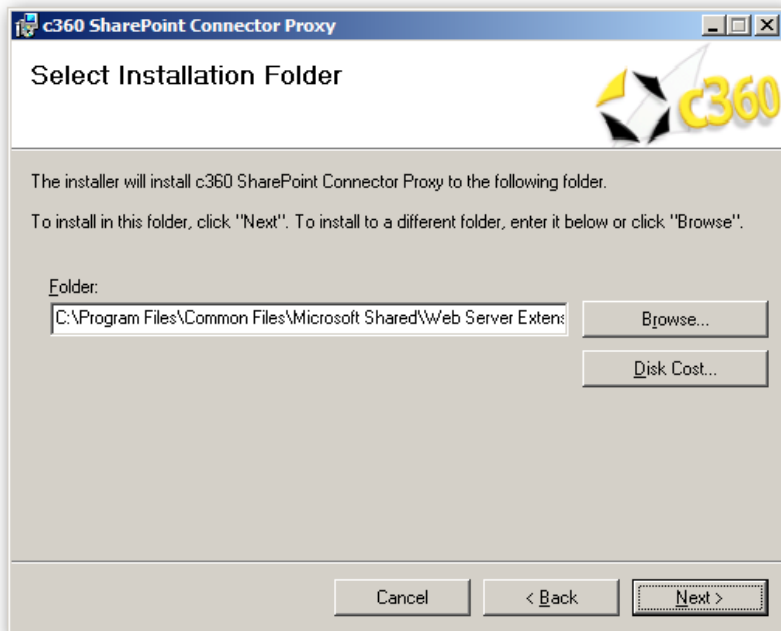
1. Double click the 'c360.SC.SPProxy.msi' file. You will see the following screens.



2. Click '**Next**' to begin the installation process.

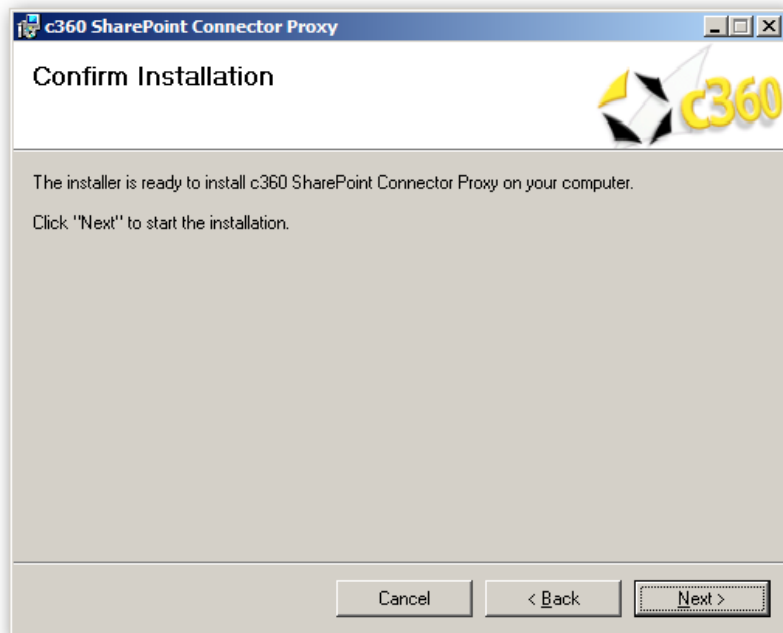


3. Accept the license agreement and click **'Next'**

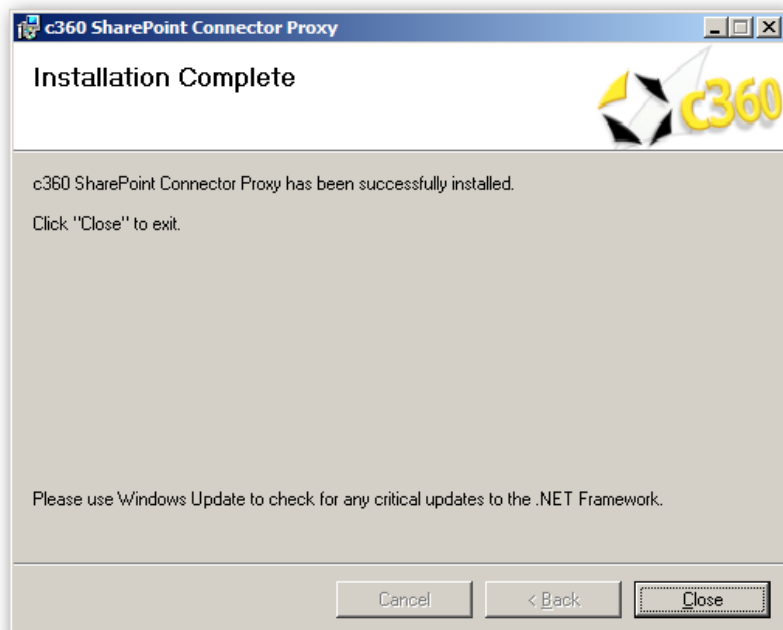


4. Click **'Next'** to install to the folder in the default directory **OR** Click **'Browse'** and select the destination folder of your choice. Then click **'Next'**.

Note: All SharePoint sites have virtual directory named **_layouts**. The selected path should be the path that this virtual directory points to. By default, its value is: "C:\Program Files\Common Files\Microsoft Shared\Web Server Extensions\12\template\layouts\"



5. Click '**Next**' to start the installation process



6. Click '**Close**' to exit the installation wizard.



Uninstall Instructions ---

Steps to uninstall c360 the product

1. On the CRM server where you installed the product navigate to 'Control Panel' and open 'Add or Remove Programs'
2. Select **c360 SharePoint Connector Proxy** from the list of the currently installed programs
3. Click 'Remove'
4. Click 'Yes' in the confirmation message box to begin the uninstall process.